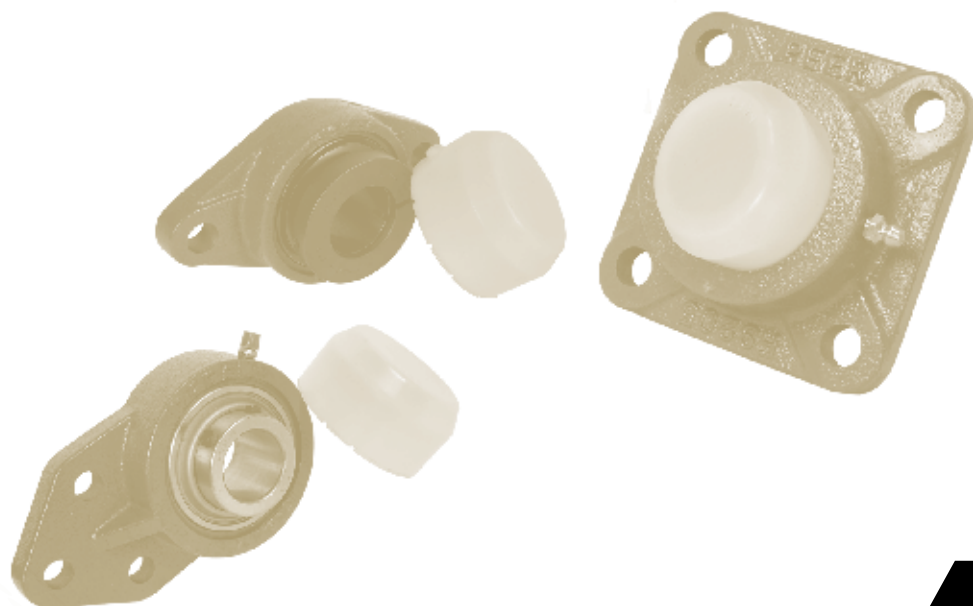


BEARING SOLUTIONS FOR BAGGAGE HANDLING EQUIPMENT



Trusted Difference at Every Turn®

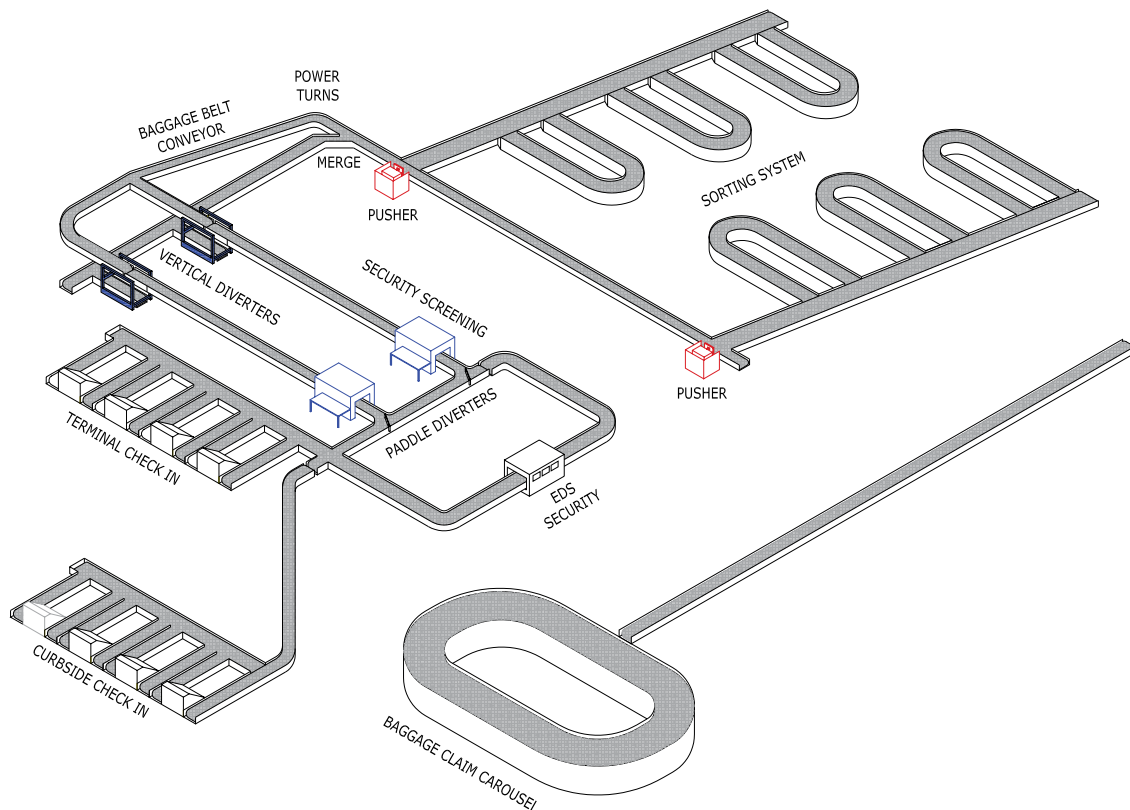
Mounted Units Tailored for the Baggage Handling Industry



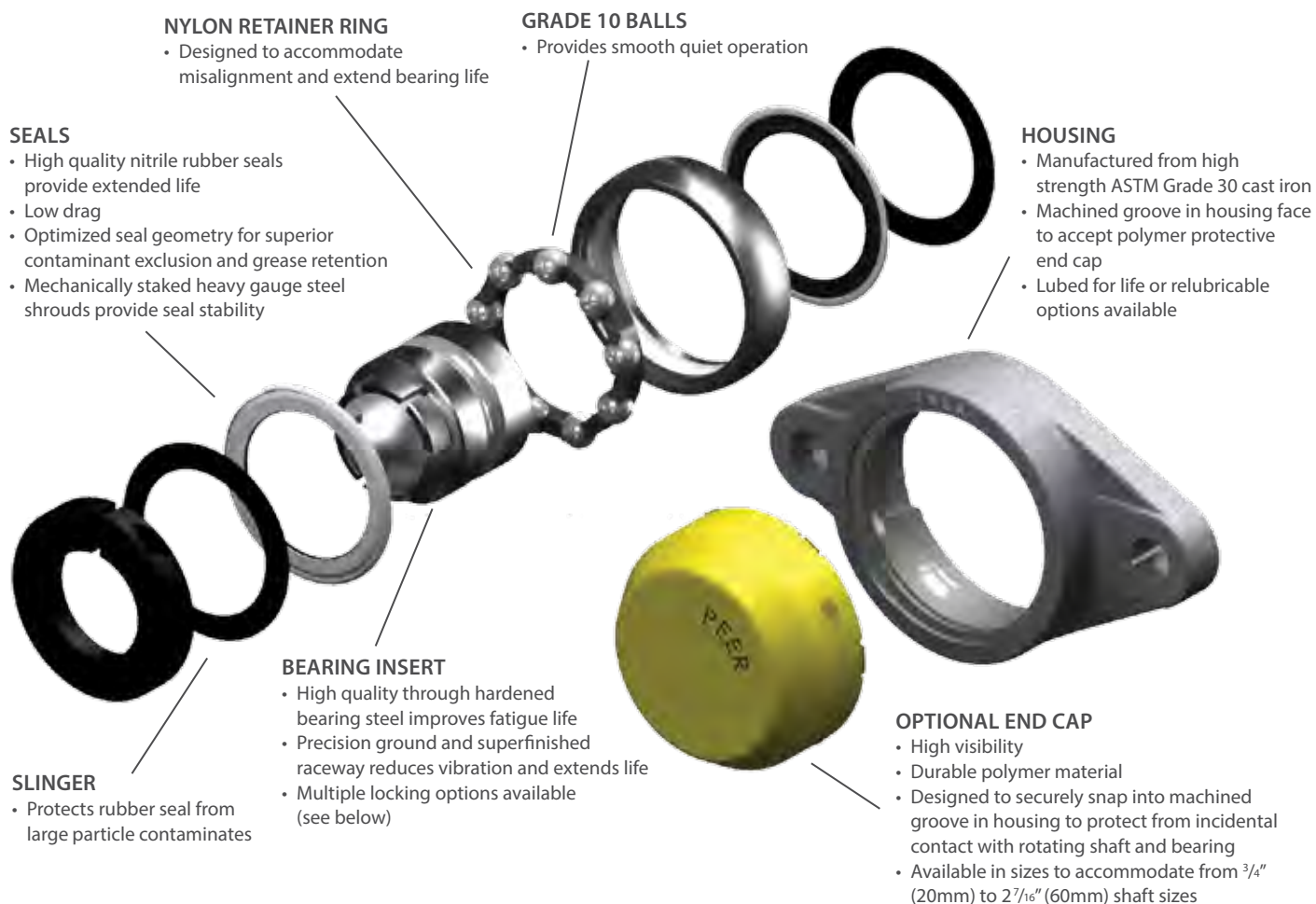
Airport travelers expect their baggage to arrive on time and in good condition. Even a small problem with an airport's baggage handling system can cause delays and frustration. Customers have been known to avoid airports with unreliable baggage handling systems.

Airport equipment manufacturers and suppliers demand the absolute highest standard in continuous operation and uptime. It's critical that the bearings on a baggage handling system are of the highest quality and provide smooth and continuous operation.

Approved by leading engineering design companies, PEER Bearing is recognized as the standard for baggage handling systems. PEER Bearing has risen to be a top tier bearing supplier to many global industrial companies. We provide quick service and available product to meet the tight design-build schedules of baggage handling equipment suppliers and the immediate needs of airport maintenance groups. With strategically located sales, engineering and global warehouses, PEER's logistic teams ensures your products are available and delivered on time.



Baggage Handling Mounted Unit Ball Bearings



Part Number Nomenclature

UC FT 207-23 BH

BEARING TYPE

UC

Dual Set Screw Lock



- Bi-directional: Two direction rotation
- Optimized set screw angle provides superior shaft hold
- Internal knurled cup point set screws for superior shaft grip
- Nylon patch reduces loosening of set screws in high vibration

HC

Eccentric Lock Collar



- Uni-directional: Single direction rotation
- Positive shaft lock that continues to tighten during rotation
- Full width inner ring offers increased shaft support and less misalignment as compared to narrow lock collar bearings

GR

GRIP-IT™ Plus Lock



- Bi-directional: Two direction rotation
- Concentric shaft holding reduces noise and vibration
- Keeper screws secure collar to bearing
- Black oxide plating resists corrosion
- One step tightening for ease of assembly

BH (Baggage Handling)

BEARING SHAFT SIZE

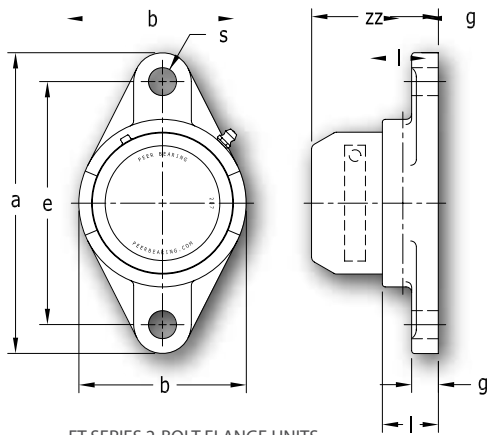
207 - 23 = $1\frac{7}{16}$
 209 - 27 = $1\frac{11}{16}$
 210 - 31 = $1\frac{15}{16}$
 211 - 35 = $2\frac{3}{16}$

CASTING STYLE

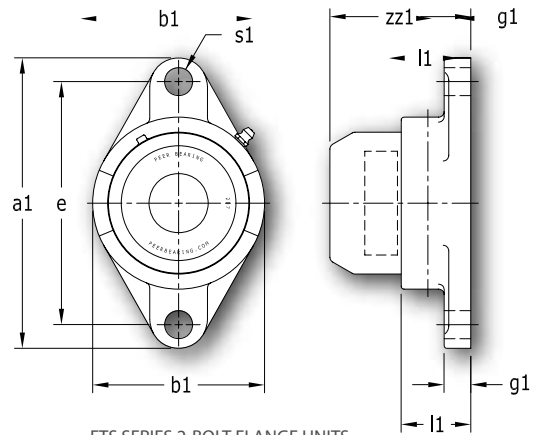
FB (3-Bolt Flange Bracket)
 T (Take-up Unit)
 FT (2-Bolt Flange for UC & GR Bearings)
 FTS (2-Bolt Flange for HC Bearings)
 F (4-Bolt Flange for UC & GR Bearings)
 FS (4-Bolt Flange for HC Bearings)



2-Bolt Flange Unit Specifications



FT SERIES 2-BOLT FLANGE UNITS
DUAL SET SCREW
GRIP-IT™ PLUS COLLAR

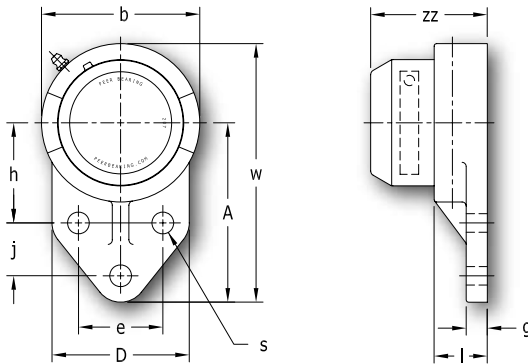


FTS SERIES 2-BOLT FLANGE UNITS
ECCENTRIC LOCK COLLAR

SIZE	DIMENSIONS MM/ (IN.)													FT Series Bolt Size (in.)	FTS Series Bolt Size (in.)
	a	a1	e	g	g1	l	l1	s	s1	b	b1	zz	zz1		
207	161.10 (6.343")	155.60 (6.126")	130.20 (5.126")	14.30 (.563")	14.30 (.563")	30.00 (1.181")	37.30 (1.469")	15.00 (.591")	15.00 (.591")	89.70 (3.531")	92.10 (3.626")	67.90 (2.673")	75.20 (2.961")	1/2"	1/2"
209	188.10 (7.406")	179.40 (7.063")	148.40 (5.843")	15.10 (.594")	14.30 (.563")	35.00 (1.378")	44.50 (1.752")	17.00 (.669")	17.00 (.669")	108.00 (4.252")	111.10 (4.374")	72.20 (2.843")	81.20 (3.197")	9/16"	9/16"
210	196.90 (7.752")	189.00 (7.441")	157.20 (6.189")	15.10 (.594")	14.30 (.563")	39.00 (1.535")	46.80 (1.843")	17.00 (.669")	17.00 (.669")	115.10 (4.531")	115.90 (4.563")	75.70 (2.980")	83.50 (3.287")	9/16"	9/16"
211	223.80 (8.811")	216.00 (8.504")	184.20 (7.252")	18.30 (.720")	20.60 (.811")	41.40 (1.630")	50.00 (1.969")	18.00 (.709")	17.00 (.669")	130.20 (5.126")	133.40 (5.252")	88.10 (3.469")	96.70 (3.807")	5/8"	9/16"
212	250.00 (9.843")	235.00 (9.252")	201.60 (7.937")	18.30 (.720")	20.60 (.811")	45.00 (1.772")	53.20 (2.094")	22.00 (.866")	17.00 (.669")	139.70 (5.500")	138.10 (5.437")	92.20 (3.630")	99.90 (3.933")	3/4"	9/16"

Protective end caps sold separately

3-Bolt Flange Bracket Unit Specifications

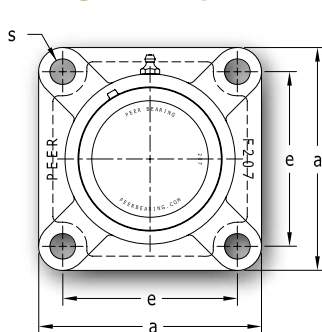


FB SERIES 3-BOLT FLANGE BRACKET UNITS
DUAL SET SCREW LOCK
ECCENTRIC LOCK COLLAR
GRIP-IT™ PLUS COLLAR

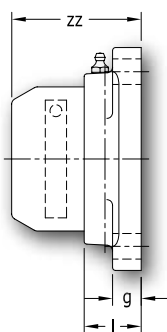
SIZE	DIMENSIONS MM / (IN)											BOLT SIZE (in.)
	w	A	b	D	l	s	g	h	j	e	zz	
207	155.65 (6.128")	108.00 (4.252")	95.30 (3.752")	82.60 (3.252")	32.00 (1.260")	13.10 (.516")	12.70 (.500")	60.30 (2.374")	31.80 (1.252")	50.80 (2.000")	70.20 (2.764")	7/16
209	175.50 (6.909")	121.10 (4.768")	106.40 (4.189")	80.20 (3.157")	36.80 (1.449")	11.90 (.469")	18.30 (.720")	65.10 (2.563")	42.90 (1.689")	54.00 (2.126")	74.00 (2.913")	3/8
210	190.50 (7.500")	131.75 (5.187")	117.50 (4.626")	101.60 (4.000")	38.00 (1.496")	13.10 (.516")	12.70 (.500")	74.60 (2.937")	41.30 (1.626")	69.90 (2.752")	74.70 (2.941")	7/16

Protective end caps sold separately

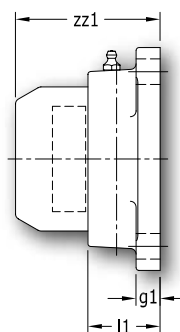
4-Bolt Flange Unit Specifications



F SERIES STANDARD 4-BOLT FLANGE UNITS
DUAL SET SCREW LOCK
GRIP-IT™ PLUS COLLAR



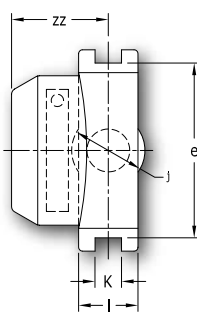
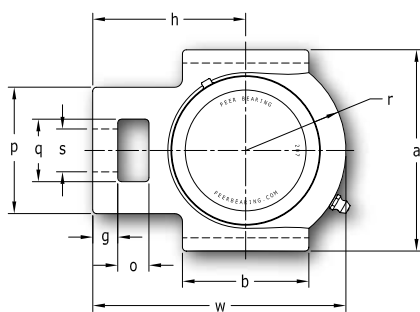
FS SERIES 2-BOLT FLANGE UNITS
ECCENTRIC LOCK COLLAR



SIZE	DIMENSIONS MM / (IN)										F SERIES BOLT SIZE (IN.)	FS SERIES BOLT SIZE (IN.)
	a	e	g	g1	l	l1	s	s1	zz	zz1		
207	117.50 (4.626")	92.10 (3.626")	15.10 (.594")	12.70 (.500")	30.10 (1.185")	38.10 (1.500")	13.50 (.531")	13.50 (.531")	68.30 (2.677")	75.50 (2.972")	7/16	7/16
209	136.50 (5.374")	105.00 (4.134")	15.90 (.626")	18.30 (.720")	38.10 (1.500")	39.70 (1.563")	15.00 (.591")	17.00 (.669")	75.20 (2.961")	76.90 (3.028")	1/2	9/16
210	142.90 (5.626")	111.10 (4.374")	15.90 (.626")	15.90 (.626")	39.70 (1.563")	46.00 (1.811")	15.00 (.591")	17.00 (.669")	76.40 (3.008")	82.70 (3.256")	1/2	9/16
211	161.90 (6.374")	130.20 (5.126")	18.30 (.720")	17.50 (.689")	42.90 (1.689")	50.00 (1.969")	18.00 (.709")	18.00 (.709")	89.25 (3.514")	96.70 (3.807")	5/8"	5/8"
212	174.60 (6.874")	142.90 (5.626")	18.30 (.720")	17.50 (.689")	47.60 (1.874")	54.80 (2.157")	18.00 (.709")	18.00 (.709")	94.45 (3.719")	101.50 (3.996")	5/8"	5/8"

Protective end caps sold separately

Take-Up Unit Specifications



T SERIES TAKE-UP UNITS
DUAL SET SCREW
GRIP-IT™ PLUS COLLAR
ECCENTRIC LOCK COLLAR

SIZE	DIMENSIONS MM / (IN)														
	o	g	p	q	s	b	K	e	a	w	j	l	r	h	zz
207	15.90 (.626")	12.70 (.500")	64.30 (2.531")	37.30 (1.469")	21.80 (.858")	64.30 (2.531")	13.50 (.531")	88.90 (3.500")	102.40 (4.031")	128.80 (5.071")	37.30 (1.469")	30.20 (1.189")	51.00 (2.008")	77.80 (3.063")	49.40 (1.945")
209	21.10 (.831")	15.90 (.626")	83.30 (3.280")	51.20 (2.016")	29.00 (1.142")	83.30 (3.280")	17.50 (.689")	102.00 (4.016")	116.70 (4.594")	144.50 (5.689")	49.20 (1.937")	34.90 (1.374")	57.20 (2.252")	87.30 (3.437")	51.30 (2.020")
210	19.10 (.752")	15.90 (.626")	83.30 (3.280")	49.20 (1.937")	29.00 (1.142")	85.70 (3.374")	17.50 (.689")	102.00 (4.016")	116.70 (4.594")	148.40 (5.843")	49.20 (1.937")	37.30 (1.469")	58.70 (2.311")	89.70 (3.531")	51.30 (2.020")
211	25.40 (1.000")	19.10 (.752")	102.40 (4.031")	64.30 (2.531")	34.90 (1.374")	95.30 (3.752")	22.00 (.866")	130.20 (5.126")	146.10 (5.752")	171.50 (6.752")	64.30 (2.531")	38.10 (1.500")	65.10 (2.563")	106.40 (4.189")	62.70 (2.469")
212	31.80 (1.252")	19.10 (.752")	102.40 (4.031")	64.30 (2.531")	34.90 (1.374")	102.40 (4.031")	22.00 (.866")	130.20 (5.126")	146.10 (5.752")	193.70 (7.626")	64.30 (2.531")	42.10 (1.657")	74.60 (2.937")	119.10 (4.689")	66.05 (2.600")

Protective end caps sold separately

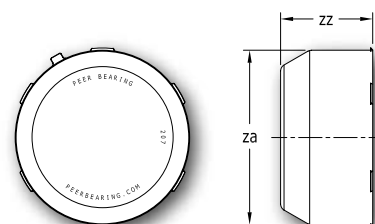
Protective End Cap Specifications

Closed

PART NUMBER	SIZE	DIMENSIONS MM / (IN)	
		za	zz
DC-207-MHE	207	76.00 (2.992")	40.70 (1.602")
DC-209-MHE	209	92.00 (3.622")	40.00 (1.575")
DC-210-MHE	210	97.00 (3.819")	40.00 (1.575")
DC-211-MHE	211	106.00 (4.173")	50.00 (1.969")
DC-212-MHE	212	116.00 (4.567")	50.00 (1.969")

Open

PART NUMBER	SIZE	DIMENSIONS MM / (IN)		SHAFT DIAMETER
		za	zz	
DC-207-MHE-OPEN	207	76.00 (2.992")	40.70 (1.602")	47.00 (1.850")
DC-209-MHE-OPEN	209	92.00 (3.622")	40.00 (1.575")	55.00 (2.165")
DC-210-MHE-OPEN	210	97.00 (3.819")	40.00 (1.575")	60.00 (2.362")
DC-211-MHE-OPEN	211	106.00 (4.173")	50.00 (1.969")	67.00 (2.638")
DC-212-MHE-OPEN	212	116.00 (4.567")	50.00 (1.969")	76.00 (2.992")



Shaft can protrude 6.35mm (.250") from bearing inner ring without interfering with cap.



Trusted Difference at Every Turn®

PEER® Bearing offers

- *A wide range of agricultural, radial, mounted unit ball bearings, and tapered roller bearings*
- *Valued bearing solutions for agricultural, electrical, fluid, HVAC, industrial transmission, material handling and off-highway applications*
- *ISO/TS 16949 certified production facilities*
- *Dedicated Research and Development center*
- *Global application and customer support*

Brazil

PEER Bearing Brazil
Avenida Marginal do Ribeirão dos Cristais, 200
Bloco 1.100 - Ref. Rodovia Anhaguera, Km 37
Jordanésia - Cajamar, SP Brazil
CEP 07775-240
Phone: +55 11 4448-8200
fale.conosco@skf.com

China

Shanghai PEER Bearing Co., Ltd.
9/F, Tower B, Central Towers
#567 Langao Road
Putuo District, Shanghai,
P.R. China
Phone: +86 21 61484816
sales@peerchina.com

Germany

PEER Bearing GmbH
Gruitener Str. 23
40699 Erkrath
Germany
Phone: +49 2104 1 42 63 -0
europe.info@peerbearing.com

Italy

PEER Bearing
Via Martin Luther King, 38/2 Scala B
40132 Bologna
Italy
Phone: +39 051 6120405
europe.info@peerbearing.com

United States

PEER Bearing Company
2200 Norman Drive
Waukegan, IL 60085
USA
Phone: +1 847 578 1000
info@peerbearing.com

BH ENG V3_032019

® PEER is a registered trademark of the PEER Group of Companies.

® Trusted Difference at Every Turn is a registered trademark of the PEER Group of Companies.

™ GRIP-IT is a trademark of PEER Bearing Company.