

MAINTENANCE-FREE BEARINGS FOR THE FOOD AND BEVERAGE INDUSTRY



Trusted Difference at Every Turn®

Maintenance-free Stainless Steel Bearings for the Food & Beverage Industry



Eliminate down time and cost of servicing or replacing bearings in difficult to reach and hazardous locations. The maintenance-free FaBXTREME® bearing solution for the food and beverage industry is designed, engineered, and manufactured by PEER Bearing to reduce costs and extend the life of your equipment.

Superior design, corrosion resistant material, and manufacturing craftsmanship provide the advantages that your food and beverage equipment needs to operate efficiently and at peak performance for years to come.

The FaBXTREME bearings feature maintenance-free, stainless steel bearing inserts and are available with your choice of stainless steel or FDA-compliant polymer

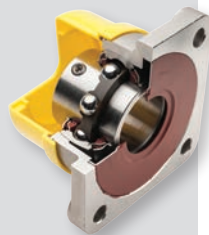
housings. Offered in a wide variety of bore sizes and housing styles, the FaBXTREME bearings provides drop in replacement capability. Available in both inch and metric bore sizes in the following housing styles.

- › Pillow Block
- › Tapped Base Pillow Block
- › 2-Bolt Flange
- › 3-Bolt Flange
- › 4-Bolt Flange
- › Take-Up Unit
- › Hanger Unit (polymer only)

Housing styles are available up to size 212 in stainless steel and up to size 208 in polymer.

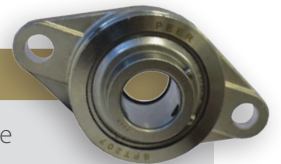
FEATURES AND ADVANTAGES

- Maintenance-free operation
- Stainless steel construction
- Drop-in replacement
- Superior contamination sealing
- Backside seals standard
- Wide inner ring
- Mobil grease FM222
- Optional open or closed end-caps with seals



BENEFITS REALIZED

- Eliminates service costs and downtime
- Corrosion protection and washdown resistant
- Fast and easy installation
- Multi-barrier protection in use and wash down
- Protects and seals inaccessible areas
- Shaft stability and dual set screw locking
- NSF H1 registered lubricant; certified Kosher/Parve; Halal
- Safety and protection

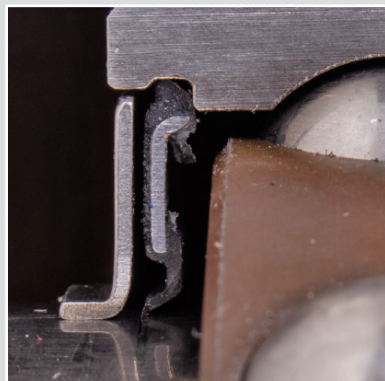
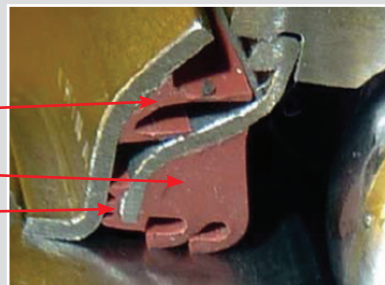


"The bearings provided have held up very well. They adapt really well to our at times harsh environment but mechanically they are exactly what we need for the extreme work load on our conveyors."

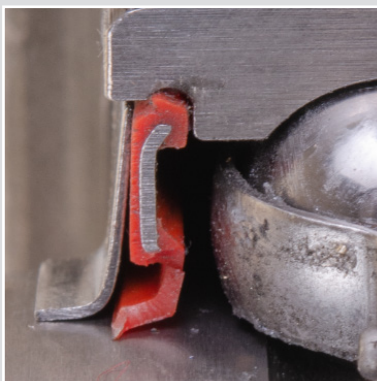
*- Maintenance Supervisor
Major USA Chicken Processing Plant*

FaBXTREME®

- 2 Axial Lips + Stainless Slinger
- 2 Radial Lips + Stainless Shroud
- Bumper Seal



Competitor A



Competitor I



Competitor K

Load and Speed

Food and beverage processing expose bearings to some of the most aggressive and demanding environments. PEER's FaBXTREME bearings will excel in all your applications, regardless of speed, load or temperature. No matter the application, PEER FaBXTREME units have you covered with the added benefits of being maintenance-free and highly corrosion resistant.

Available in both stainless steel and polymer housings, with open and closed end caps for all of your equipment requirements.

FaBXTREME units from PEER give you the cost saving, peace of mind and worry-free results you require.

Series (OD)	Load Rating (lbs./Kn)		Speed Ratings
	Dynamic (Cr)	Static (Cor)	Max RPM
201-204 (47mm)	2293	1196	1950
	10.20	5.32	
205 (52mm)	2518	1416	1775
	11.20	6.30	
206 (62mm)	3507	2032	1500
	15.60	9.04	
207 (72mm)	4631	2743	1290
	20.60	12.20	
208 (80mm)	5868	3597	1125
	26.10	16.00	
209 (85mm)	5890	3687	1020
	26.20	16.40	
210 (90mm)	6317	4181	990
	28.10	18.60	
211 (100mm)	7801	5261	900
	34.70	23.40	
212 (110mm)	9419	6497	810
	41.90	28.90	

Nomenclature



Interchange

STAINLESS BEARING WITH STAINLESS HOUSING

Type	PEER	AMI	IPTCI	KML	SealMaster	Browning	Dodge
Pillow Block	UCNP205-16B	MUCP205-16	SUCSP205-16	SSUCP205-16	CRPS-PN16	SPS-S216	P2B-SCEZ-100-SHSS
Tapped Base	UCNPAS205-16B	MUCTB205-16	SUCSPAS205-16	SSUCPA205-16	CRFS-PN16	STBS-S216	TB-SCEZ-100-SHSS
2-Bolt	UCNFT205-16B	MUCFL205-16	SUCSFL205-16	SSUCFL205-16	CRFTS-PN16	SF2S-S216	F2B-SCEZ-100-SHSS
3-Bolt	UCNFB205-16B	MUCFB205-16	SUCSFB205-16	SSUCFB205-16	CRFS-PN16	-	FB-SCEZ-100-SHSS
4-Bolt	UCNF205-16B	MUCF205-16	SUCSF205-16	SSUCF205-16	CRFS-PN16	SF4S-S216	F4B-SCEZ-100-SHSS
Take-Up	UCNT205-16B	MUCT205-16	SUCST205-16	SSUCT205-16	-	-	WSTU-SCEZ-100-SHSS

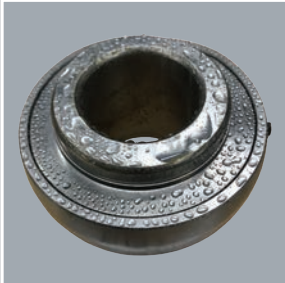
STAINLESS BEARING WITH POLYMER HOUSING

Type	PEER	AMI	IPTCI	KML	SealMaster	Browning	Dodge
Pillow Block	UCNP205-16F	MUCPPL205-16	SUCTP205-16	SSUCTPP205-16	CRPC-PN16	CPS-S216	P2B-SCEZ-100-PPSS
Tapped Base	UCNPAS205-16F	MUCTBL205-16	SUCTPA205-16	SSUCTPTB205-16	CRTBC-PN16	CTBS-S216	TB-SCEZ-100-PPSS
2-Bolt	UCNFT205-16F	MUCNFL205-16	SUCTFL205-16	SSUCTPFL205-16	CRFTC-PN16	CF2S-S216	F2B-SCEZ-100-PPSS
3-Bolt	UCNFB205-16F	MUCFBL205-16	SUCTFB205-16	SSUCTPFB205-16	CRFBC-PN16	-	FB-SCEZ-100-PPSS
4-Bolt	UCNF205-16F	MUCFPL205-16	SUCTF205-16	SSUCTPF205-16	CRFC-PN16	CF4S-S216	F4B-SCEZ-100-PSS
Take-Up	UCNT205-16F	MUCTPL205-16	-	SSUCTPT205-16	-	-	WSTU-SCEZ-100-PPSS
Hanger	UCNHA205-16F	MUCHPL205-16	-	-	-	-	-

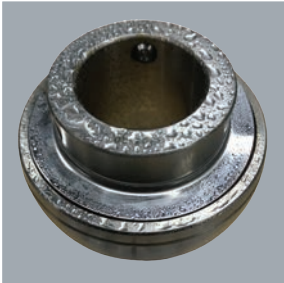
Accelerated Reagent Test Determines Corrosion Rate

Each test piece was sprayed with an accelerated corrosion reagent solution and inspected at various time intervals. Test results show an acceleration of corrosion.

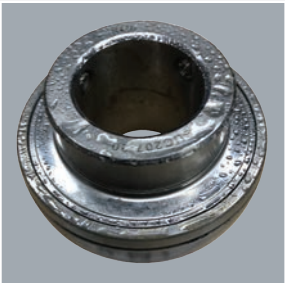
CONTACT TIME: 0 MINUTES



Competitor A



Competitor I

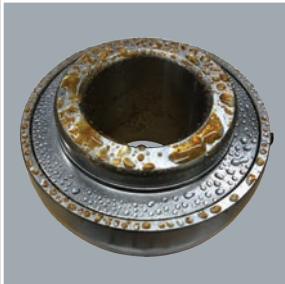


Competitor K

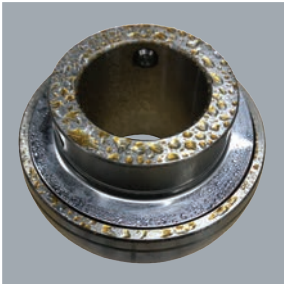


PEER

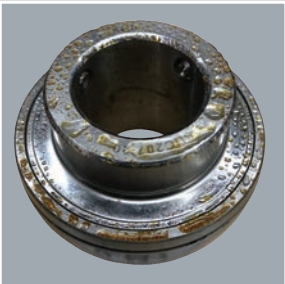
CONTACT TIME: 2 MINUTES



Competitor A



Competitor I



Competitor K

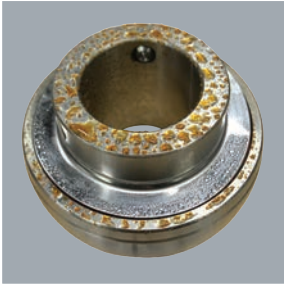


PEER

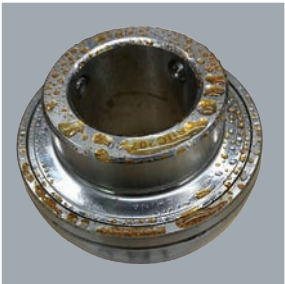
CONTACT TIME: 5 MINUTES



Competitor A



Competitor I



Competitor K

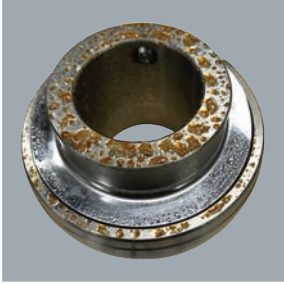


PEER

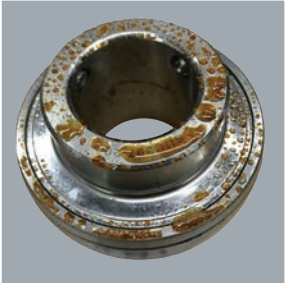
CONTACT TIME: 10 MINUTES



Competitor A



Competitor I



Competitor K



PEER



Trusted Difference at Every Turn®

PEER® Bearing offers

- *A wide range of agricultural, radial, mounted unit ball bearings, and tapered roller bearings*
- *Valued bearing solutions for agricultural, electrical, fluid, food and beverage, industrial transmission, material handling and off-highway applications*
- *ISO/TS 16949 certified production facilities*
- *Dedicated Research and Development center*
- *Global application and customer support*

Brazil

PEER Bearing Brazil
Avenida Marginal do Ribeirão dos Cristais, 200
Bloco 1.100 - Ref. Rodovia Anhaguera, Km 37
Jordanésia – Cajamar, SP Brazil
CEP 07775-240
Phone: +55 11 4448-8200

China

Shanghai PEER Bearing Co., Ltd.
9/F, Tower B, Central Towers
#567 Langao Road
Putuo District, Shanghai,
P.R. China
Phone: +86 21 61484816

Germany

SKF Competence Center Düsseldorf
Kokkolastraße 2
40882 Ratingen
Germany
Phone: +49 02102 59795-0

Italy

PEER Bearing
Via Martin Luther King, 38/2 Scala B
40132 Bologna
Italy
Phone: +39 051 6120405

United States

PEER Bearing Company
2200 Norman Drive
Waukegan, IL 60085
USA
Phone: +1 847 578 1000
www.peerbearing.com
info@peerbearing.com

FaBXTREME ENG_062020

* PEER is a registered trademark of the SKF Group.

* Trusted Difference at Every Turn is a registered trademark of the PEER Group of Companies.

* FaBXTREME is a registered trademark of PEER Bearing Company.