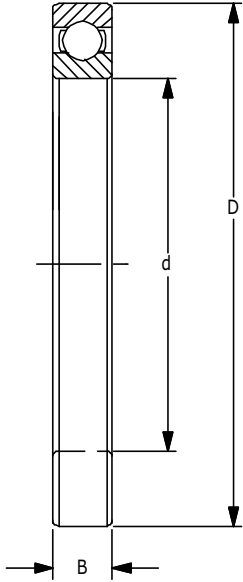




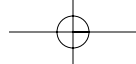
16000 SERIES DEEP GROOVE BALL



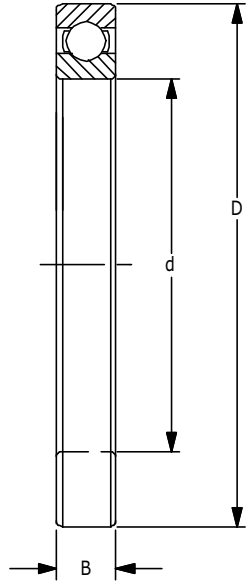
This deep groove, Conrad construction bearing is specifically designed to provide maximum performance by means of precise ball complement selection. The honed raceways offer a perfectly balanced bearing capable of operating under straight radial, thrust or combination loads. Consult PEER's engineering staff for proper selection. Stainless steel 440C material is available upon request. Radial clearance is selected in accordance to applications ranging from C2-C0-C3-C4 fits.

Part Number	Bore d	Tolerance +.0000 to minus	OD D	Tolerance +.0000 to minus	Width B	Tolerance +.0000 to minus	Basic Load Ratings lbf N		Weight lbs	Limiting Speed of Open Bearing (rpm)	
							Dynamic Cr	Static Cor		Oil	Grease
* **16100	.3937	0.0003	1.1024	0.0005	.3150	0.0050	1,030	440	0.03	34,000	29,000
	10		28		8		4582	1957	0.0136		
16001	.4724	0.0003	1.1024	0.0005	.3150	0.0050	1168	548		30000	26000
	12		28		7		5099	2392	0.019		
* **16101	.4724	0.0003	1.1811	0.0005	.3150	0.0050	1150	540	0.03	30000	26000
	12		30		8		5116	2402	0.0136		
*16002	.5906	0.0003		0.0005	.3150	0.0050	1260	635	0.06	26000	22000
	15		32		8		5605	2825	0.0272		
*16003	.6693	0.0003		0.0005	.3150	0.0050	1530	755	0.07	24000	20000
	17		35		8		6806	3359	0.0317		
*16004	.7874	0.0004		0.0005	.3150	0.0050	2110	1140	0.11	21000	18000
	20		42		8		9386	5071	0.0498		
16005	.9843	0.0004		0.0005	.3150	0.0050	2660	1320	0.14	18000	15000
	25		47		8		10053	5872	0.0635		
16006	1.1811	0.0004		0.0005	.3543	0.0050	2970	1860	0.19	15000	13000
	30		55		9		13212	8274	0.0861		
16007	1.3780	0.0005		0.0005	.3543	0.0050	3600	2315	0.25	14000	12000
	35		62		9		16014	10298	0.1134		
16008	1.5748	0.0005		0.0005	.3543	0.0050	3750	2600	0.28	12000	10000
	40		68		9		16681	11566	0.1270		
16009	1.7717	0.0005		0.0005	.3937	0.0050	4700	3400	0.38	11000	9200
	45		75		10		20907	15125	0.1723		
16010	1.9685	0.0005		0.0005	.3937	0.0050	4900	3750	0.40	9800	8400
	50		80		10		21797	16681	0.1814		
16011	2.1654	0.0006		0.0006	.4331	0.0060	6350	4800	0.58	9000	7700
	55		90		11		28247	21352	0.2630		
16012	2.3622	0.0006		0.0006	.4331	0.0060	6610	5200	0.62	8300	7000
	60		95		11		29404	23132	0.2812		
16013	2.7559	0.0006		0.0006	.4331	0.0060	6850	5650	0.66	7700	6500
	65		100		11		30472	25133	0.2993		
16014	2.7559	0.0006		0.0006	.5118	0.0060	8550	6950	0.96	7100	6100
	70		110		13		38034	30916	0.4354		

* Sizes also available with two shields (ZZ). Width Dimensions - No Change
 ** Sizes also available with two seals (2RS). Width Dimensions - No Change



16000 SERIES DEEP GROOVE BALL (continued)



This deep groove, Conrad construction bearing is specifically designed to provide maximum performance by means of precise ball complement selection. The honed raceways offer a perfectly balanced bearing capable of operating under straight radial, thrust or combination loads. Consult PEER's engineering staff for proper selection. Stainless steel 440C material is available upon request. Radial clearance is selected in accordance to applications ranging from C2-C0-C3-C4 fits.

Part Number	Bore d	Tolerance +.0000 to minus	OD D	Tolerance +.0000 to minus	Width B	Tolerance +.0000 to minus	Basic Load Ratings lbf N		Weight lbs	Limiting Speed of Open Bearing (rpm)	
							Dynamic Cr	Static Cor		Oil	Grease
16015	2.9528	0.0006		0.0006	.5118	0.0060	8890	7550	1.01	6700	5700
	75		115		13		39456	33585	0.4581		
16016	3.1496	0.0006		0.0007	.5512	0.0060	10700	8950	1.31	6200	5300
	80		125		14		47598	39813	0.5942		
16017	3.3465	0.0006		0.0007	.5512	0.0080	11100	9700	1.38	5900	5000
	85		130		14		49377	43149	0.6259		
16018	3.5433	0.0006		0.0007	.6299	0.0080	13100	11200	1.87	5600	4700
	90		140		16		58274	49822	0.8482		
16019	3.7402	0.0006		0.0007	.6299	0.0080	13600	12100	1.95	5300	4500
	95		145		16		60498	53826	0.8845		
16020	3.9370	0.0006		0.0007	.6299	0.0080	13500	12200	2	5000	4200
	100		150		16		60053	54270	0.9072		
16021	4.1339	0.0006		0.0010	.7087	0.0080	16300	14800	2.64	4700	4000
	105		160		18		72509	65836	1.1975		
16022	4.3307	0.0006		0.0010	.7480	0.0080	18400	16400	3.21	4500	3800
	110		170		19		81851	72954	1.4560		
16024	4.7244	0.0006		0.0010	.7480	0.0080	19100	17800	3.96	4100	3500
	120		180		19		84964	79181	1.7962		
16026	5.1181	0.0009		0.0012	.8661	0.0100	23800	22700	5.92	3800	3200
	130		200		22		105872	100979	2.6853		
16028	5.5118	0.0009		0.0012	.8661	0.0100	24700	24400	6.29	3500	3000
	140		210		22		109875	108541	2.8531		
16030	5.9055	0.0009		0.0012	.9449	0.0100	28200	28200	7.88	3200	2800
	150		225		24		125445	125445	3.5743		
16032	6.2992	0.0009		0.0012	.9843	0.0100	3200	32500	9.5	3000	2600
	160		240		25		142349	144573	4.3092		
16034	6.6929	0.0009		0.0014	1.1024	0.0100	3800	38500	12.7	2800	2400
	170		260		28		169039	171263	5.7607		
16036	7.0866	0.0009		0.0014	1.2205	0.0100	42500	44500	16.7	2700	2300
	180		280		31		189057	197954	7.5751		
16038	7.4803	0.0010		0.0014	1.2205	0.0120	44000	48500	17.4	2500	2100
	190		290		31		195730	215747	7.8926		
16040	7.8740	0.0010		0.0014	1.3386	0.0120	49000	54500	22.2	2400	2000
	200		310		34		217972	242438	10.0699		

