



EVERYWHERE YOU TURN



TILL X TREME™
MAINTENANCE FREE TILLAGE UNIT

Value Proposition

- Longer Life*
- Multi-Zone lubrication
- Dynamic alignment capability
- Maintenance Free — no need for daily relube
- Save time — up to 25 extra acres per day
- Save Money — no Grease to purchase
- Reduced environmental impact
- Pre-lubricated so no additional grease being used in service
- No excess grease purge impacting service areas and fields
- High Strength Ductile iron construction (65-45-12)
- Interchangeable with existing mounting patterns

*Double the life of the competition with no relubrication!
Ref. — MUD Slurry Test

TILLXTREME™ Maintenance Free Gang Disc Tillage Bearings



PEER Bearing Company announces a newly developed line of TILLXTREME™ maintenance free bearing units developed specifically for use on gang mounted disc tillage equipment. Currently, frequent relubrication of tillage bearings is necessary to maintain proper bearing function. The time spent relubricating bearings on a disc tillage implement results in lost time in the field and reduced productivity. By eliminating the need for bearing relubrication, the PEER TILLXTREME™ units provide substantial value through increased productivity while decreasing maintenance costs and the environmental impact caused by purged grease.

For tillage applications, contamination is the leading cause of bearing failure and conventional bearings are not capable of long term performance in harsh tillage environments without frequent relubrication. The PEER TILLXTREME™ units utilize an all new, patent pending, seal construction designed to keep dirt, crop residue and water out of the bearing. By preventing contaminant ingress into the bearing, relubrication can be eliminated. Lab testing has shown mud slurry test results in excess of 1300 hours on the TILLXTREME™ units.



PEER TILLXTREME™ bearing units are being offered in popular round and square bore sizes. Heavy duty, ductile iron trunnion and two bolt pillow block styles are available for C-Arm standards and stamped steel styles are available for rigid standards.

Features

Bearings

- Many popular bore sizes and styles (round and square) available
- Deep raceways for thrust load capacity
- Superfinished raceways and Grade 10 balls for improved precision and reduced rolling surface wear

Seals

- All new, patent pending seal pack developed specifically for the harshest tillage environments
- Labyrinth type design with multiple seal zones protect under the harshest conditions
- Precision ground seal lands for long seal life
- Knurled seal landing grooves for improved seal retention

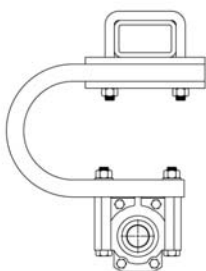
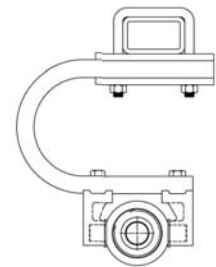
Lubrication

- Multiple lubrication zones provide superior lubrication for the bearing surfaces and seal lips while providing additional sealing and corrosion protection
- Heavy duty, NLGI # 2 grease with extreme pressure (EP) additives for bearing surface protection.
- Lithium Complex thickener for high temperature and long life working stability
- ISO VG 220 synthetic base oil for optimized lubrication under heavily loaded conditions



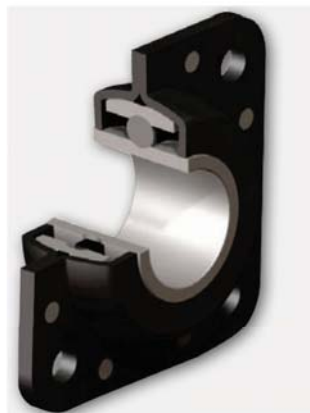
Tillage Trunnion Unit (TTU)

- Heavy duty Ductile Iron construction; 65-45-12
- Dynamic misalignment capability
- Precision machined trunnion posts for consistent fit with hangers and improved wear life



Tillage Pillowblock Unit (TPU)

- Ease of mounting to C-arm type bearing standards
- Heavy duty ductile iron construction; 65-45-12
- Dynamic misalignment capability allows for deflection of disc gangs while preventing detrimental stress to the bearing
- All new, patent pending housing design



Flanged Disc Tillage Unit (FD)

- Stamped steel riveted housing
- Anti-rotation device
- Dynamic misalignment capability

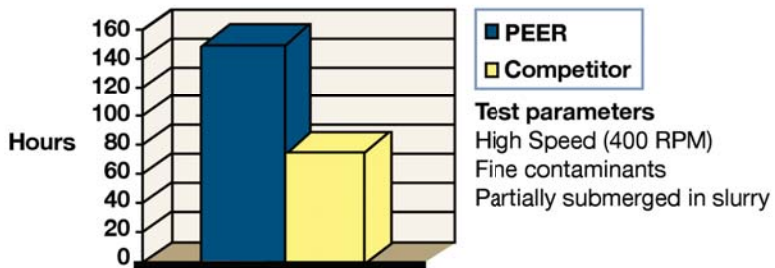




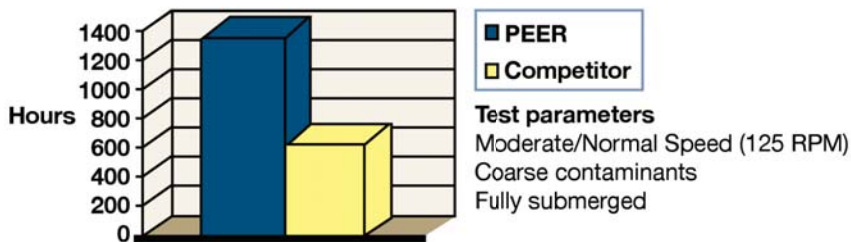
MUD Slurry Testing

The mud slurry test is performed to determine the effectiveness of the bearing seals to retain grease and keep out contaminants under extreme environmental conditions.

Independent Lab Test



PEER Lab Test



competitor
After 350 hours



competitor
After 700 hours

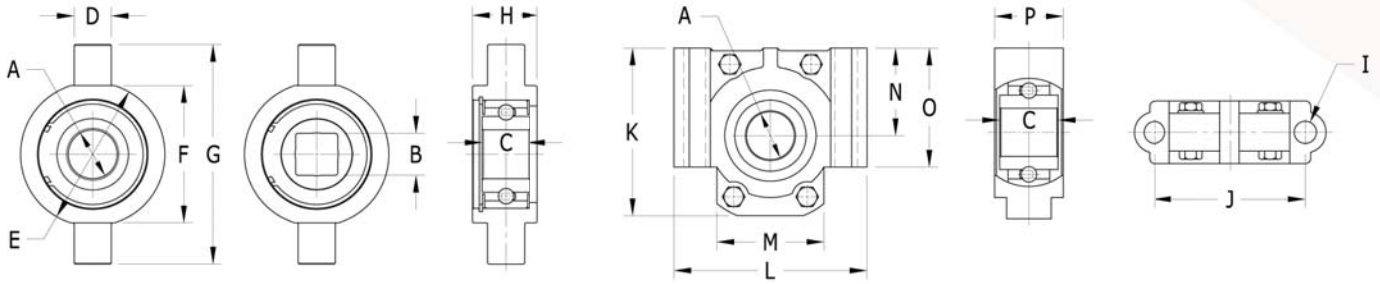


PEER
After 350 hours



PEER
After 700 hours

Dimensional Tables

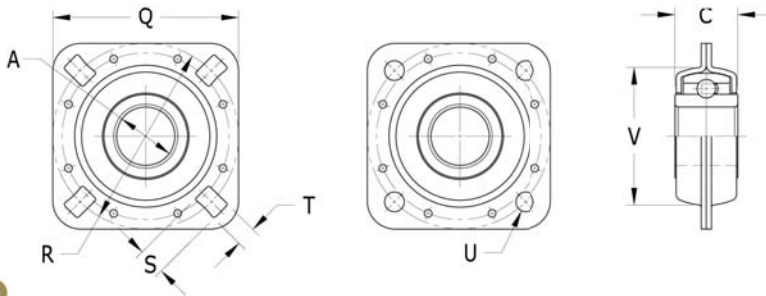


TTU

PEER PART NUMBER	A		B Square Shaft		C		D		E		F		G		H	
	in.	mm	in.	mm	in.	mm	in.	mm	in.	mm	in.	mm	in.	mm	in.	mm
W211K56-TTU	1.785	45.339	—	—	1.750	44.450	1.375	34.925	5.250	133.350	5.000	127.000	8.000	203.200	2.441	62.000
W211K58-TTU	1.969	50.018	—	—	1.969	50.000	1.375	34.925	5.250	133.350	5.000	127.000	8.000	203.200	2.441	62.000
W211K59-TTU	—	—	1.500	38.100	1.750	44.450	1.375	34.925	5.250	133.350	5.000	127.000	8.000	203.200	2.323	59.000
W214K51-TTU	2.688	68.278	—	—	2.688	68.262	1.500	38.100	6.000	152.400	6.000	152.400	9.000	228.600	2.992	76.000
W214K52-TTU	2.280	57.912	—	—	2.688	68.262	1.500	38.100	6.000	152.400	6.000	152.400	9.000	228.600	2.992	76.000

TPU

PEER PART NUMBER	A		C		I		J		K		L		M		N		O		P	
	in.	mm	in.	mm	in.	mm	in.	mm	in.	mm	in.	mm	in.	mm	in.	mm	in.	mm	in.	mm
W211K57-TPU	1.785	45.339	2.125	53.975	0.807	20.500	5.500	139.700	6.102	155.000	7.008	178.000	3.768	95.700	3.189	81.000	4.331	110.000	2.283	58.000



FD

PEER PART NUMBER	A		B Square Shaft		C		Q		R Bolt Circle		S		T		U		V Min. Frame Opening	
	in.	mm	in.	mm	in.	mm	in.	mm	in.	mm	in.	mm	in.	mm	in.	mm	in.	mm
FD211K59-1-1/2SQ	—	—	1.500	38.100	2.000	50.800	5.500	139.700	5.500	139.700	0.687	17.450	0.531	13.487	—	—	4.492	114.100
FD211K60-1-3/4RD	1.780	45.212	—	—	2.188	55.562	5.500	139.700	5.500	139.700	—	—	—	—	0.531	13.487	4.492	114.100
FD211K61-2-3/16RD	2.188	55.575	—	—	2.188	55.562	5.500	139.700	5.500	139.700	—	—	—	—	0.531	13.487	4.492	114.100
FD212K51-60RD	2.402	61.000	—	—	2.205	56.000	6.811	173.000	7.962	202.232	—	—	—	—	0.640	16.256	5.000	127.000



PEER Developed AGXTREME™ bearing seals specifically for harsh and severe environments. The AGXTREME™ seal design has single (F or G), double or triple lip seal options all bonded to a thick gauge steel shroud for protection even in the harshest of environments. Applications Include:

Agriculture

Combines, Hay Balers, Mower Conditioners, Cotton Strippers, Augers, Planters/Grain Drills

Lawn & Garden

Lawn Mowers

Conveyors

Grain, Aggregate

PEER offers a wide range of Agricultural Bearing Products

Agricultural Bearings | Mounted Units
Radial Ball Bearings | Tapered Roller Bearings



USA Headquarters

2200 Norman Drive
Waukegan, IL 60085

p (847) 578-1000 | **f** (847) 578-1200

e info@peerbearing.com

www.peerbearing.com

