

PEER Corrosion-Resistant Bearing Units





Corrosion Resistant

Stainless Steel units...

The clear choice for **extreme** conditions with heavier loads.

Even under the harshest conditions - sulfuric, nitric or acetic acids and in contaminated or uncontaminated water conditions - Peer's all stainless steel units provide excellent corrosion resistance.

- Stainless steel housings are designed with solid bases/back and smooth surfaces to allow for complete and easy wash down.
- Stainless steel bearings are designed with extended inner rings for shaft stability and set screw locking for bi-directional applications.*
- Standard closures include a stainless steel slinger over a full contact silicon seal to form a double barrier of protection during operation and wash down.
- Stainless steel bearings are filled with FDA/USDA (approved for incidental food contact) water/wash resistant, odorless, tasteless Mobilgrease FM102
- Stainless steel units are available from stock: *
 - Pillow blocks (P)
 - Tapped base pillow blocks (PAS)
 - Two-bolt flange (FT)
 - Three bolt-flange (FB)
 - Four-bolt flange (F).
- Stainless steel bearings are available in common inch and metric shaft sizes ranging from 1/2" to 1 1/2" and 20mm to 40mm.*



Mounted Units... To operate in v

PBT Thermoplastic Housings with Stainless Steel Bearings...or...PBT Thermoplastic Housings with Stainless/Zinc Chromate Bearings...

Two great options for **severe** conditions

PEER Thermoplastic housings will cope with severe wash down conditions and temperatures to 285° F and have a tensile strength of 17,300 PSI (ASTM D638). They are resistant to moisture absorption and have high mechanical properties. These units maintain excellent chemical resistant ratings even in contact with hydrochloric, sulfuric, nitric and acetic acids. In addition, they can resist most hydroxides and alcohols.

- Housings are made from G.E. Valox® virgin PBT thermoplastic material and are designed with solid bases/back and smooth surfaces to allow for complete and easy wash down.
 - Stainless steel and stainless/zinc chromate bearings are designed with extended inner rings for shaft stability and set screw locking for bi-directional applications.*
 - Standard closures include a stainless steel slinger over a full contact silicon seal to form a double barrier of protection during operation and wash down.
 - Stainless steel and stainless/zinc chromate bearings are filled with FDA/USDA (approved for incidental food contact) water/wash resistant, odorless, tasteless Mobilgrease FM102
 - Thermoplastic units are available from stock:*
- Pillow blocks (P)
 - Tapped base pillow blocks (PAS)
 - Two-bolt flange (FT)
 - Three bolt-flange (FB)
 - Four-bolt flange (F)
 - Hanger (HA)
 - Take-up (T)
- Stainless steel and stainless/zinc chromate bearings are available in common inch and metric shaft sizes from 1/2" to 1 1/2" and 20mm to 40mm.*



* For alternative locking devices, additional housings styles and bore sizes, please contact your Peer Bearing Co. sales representative.

Actually any Corrosive Environment

Electroless Nickel plated... for moderate contamination conditions

With an eye toward economy in addition to contamination resistance, these PEER units are designed with black oxide inserts and electroless nickel plated housings. The results are mounted ball bearing units ideal for applications requiring corrosion resistance superior to the protection afforded by conventional painted cast or ductile iron housings.

- Housings plated with .001" thick electroless, high phosphorous (+10%) nickel.
- Electroless Nickel plated over premium (Grade 30) cast iron or high strength 65-45-12 ductile iron.

- Bearing available in all standard locking devices; set screw, eccentric locking collars or premium *GRIP-IT* locking collars.

- Black oxide bearings designed with slingers and full contact metal shroud seals for maximum protection.

- Castings available in any style listed in the PEER catalog.

- Black oxide bearings are available in all common inch and metric shaft sizes.



Material Specifications

SSUCP200 Series**

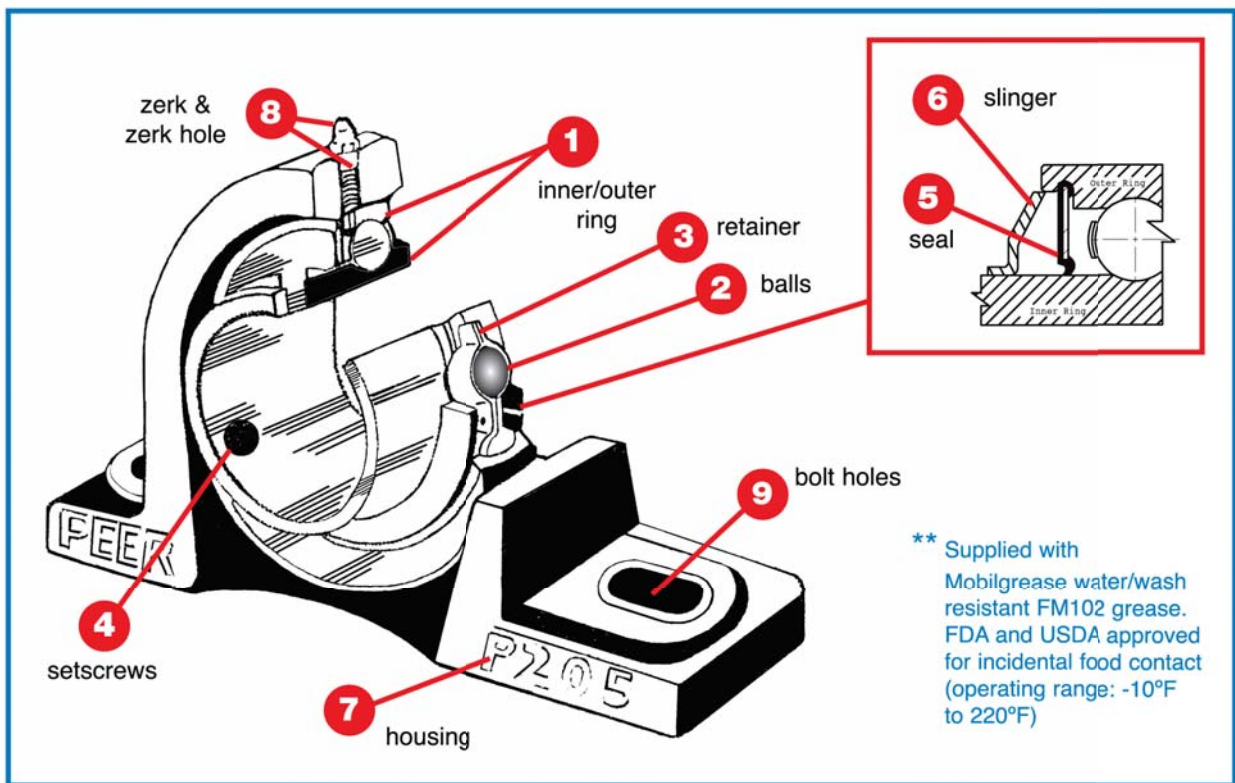
All Stainless Steel Bearing/ Housing Unit

1. Stainless steel AISI 440C
2. Stainless steel AISI 440C
3. Stainless steel AISI 302
4. Stainless steel AISI 420
5. FDA approved silicone rubber (-10°F to 220°F)
6. Stainless steel AISI 302
7. Solid base stainless steel AISI 304
8. Stainless steel AISI 304

SSUCP200-PBT Series**

Stainless Steel Bearing w/PBT (Thermoplastic) Housing

1. Stainless steel AISI 440C
2. Stainless steel AISI 440C
3. Stainless steel AISI 302
4. Stainless steel AISI 420
5. FDA approved silicone rubber (-10°F to 220°F)
6. Stainless steel AISI 302
7. G.E. Valox® 420 glass filled PBT (thermoplastic) solid base
8. Stainless steel zerk and stainless steel lined zerk hole for added strength
9. Stainless steel bolt bushing for added strength



** Supplied with Mobilgrease water/wash resistant FM102 grease. FDA and USDA approved for incidental food contact (operating range: -10°F to 220°F)

ZUCP200-PBT Series**

Zinc/Stainless Bearing w/PBT (Thermoplastic) Housing








1. Zinc chromate plated (4-6um thick) 52100 steel
2. Stainless steel AISI 440C
3. Stainless steel AISI 302
4. Stainless steel AISI 420
5. FDA approved silicone rubber (-10°F to 220°F)
6. Stainless steel AISI 302
7. G.E. Valox® 420 glass filled PBT (thermoplastic) solid base
8. Stainless steel zerk and stainless steel lined zerk hole for added strength
9. Stainless steel bolt bushing for added strength

UCP200-BENP Series

Black Oxide Plated Bearing w/Electroless Nickel Plated Housing

1. Black oxide plated 52100 steel
 2. 52100 steel-grade 10
 3. Stamped steel C1010
 4. Black oxide plated steel
 5. Buna-N rubber bonded to steel shroud
 6. Black oxide plated steel
 7. Electroless nickel (.001" thick) plated over cast or ductile iron
 8. Clear zinc plated steel zerk
- Grease: Shell Alvania RL2

Interchange for PEER's Corrosion-Resistant Mounted Units Available in a full range of popular sizes

BEARING STYLE	DESCRIPTION	PEER	MRC	AMI
 PILLOW BLOCK	STAINLESS STEEL BEARING & HOUSING	SSUCP200 SERIES		MUCP200 SERIES
	STAINLESS BRG & THERMOPLASTIC HOUSING	SUCP200-PBT SERIES	CPB100-SSG SERIES	MUCPPL200 SERIES
	ZINC BRG & THERMOPLASTIC HOUSING	ZUCP200-PBT SERIES	CPB100-ZM SERIES	UCPPL200 MZ SERIES
 4 BOLT FLANGE	STAINLESS STEEL BEARING & HOUSING	SSUCF200 SERIES		
	STAINLESS BRG & THERMOPLASTIC HOUSING	SUCF200-PBT SERIES	C4F100-SSG SERIES	MUCFPL200 SERIES
	ZINC BRG & THERMOPLASTIC HOUSING	ZUCF200-PBT SERIES	C4F100-ZM SERIES	UCFPL200 MZ SERIES
 2 BOLT FLANGE	STAINLESS STEEL BEARING & HOUSING	SSUCFT200 SERIES		MUCFL200 SERIES
	STAINLESS BRG & THERMOPLASTIC HOUSING	SUCFT200-PBT SERIES	C2F100-SSG SERIES	MUCNFL200 SERIES
	ZINC BRG & THERMOPLASTIC HOUSING	ZUCFT200-PBT SERIES	C2F100-ZM SERIES	UCNFL200 MZ SERIES
 3 BOLT FLANGE	STAINLESS STEEL BEARING & HOUSING	SSUCFB200 SERIES		
	STAINLESS BRG & THERMOPLASTIC HOUSING	SUCFB200-PBT SERIES		MUCFBL200 SERIES
	ZINC BRG & THERMOPLASTIC HOUSING	ZUCFB200-PBT SERIES		UCFBL200 MZ SERIES
 TAP BASE	STAINLESS STEEL BEARING & HOUSING	SSUCPAS200 SERIES		
	STAINLESS BRG & THERMOPLASTIC HOUSING	SUCPAS200-PBT SERIES	CTB100-SS SERIES	MUCTBL200 SERIES
	ZINC BRG & THERMOPLASTIC HOUSING	ZUCPAS200-PBT SERIES	CTB100-ZM SERIES	UCTBL200 MZ SERIES
 TAKE UP	STAINLESS STEEL BEARING & HOUSING	SSUCT200 SERIES		
	STAINLESS BRG & THERMOPLASTIC HOUSING	SUCT200-PBT SERIES		MUCTPL200 SERIES
	ZINC BRG & THERMOPLASTIC HOUSING	ZUCT200-PBT SERIES		UCTPL200 MZ SERIES
 HANGER	STAINLESS STEEL BEARING & HOUSING	SSUCHA200 SERIES		
	STAINLESS BRG & THERMOPLASTIC HOUSING	SUCHA200-PBT SERIES		MUCHPL200 SERIES
	ZINC BRG & THERMOPLASTIC HOUSING	ZUCHA200-PBT SERIES		UCHPL200 MZ SERIES

Interchange for reference only. Available in full range of popular shaft sizes.

Distributed by:



USA Headquarters

2200 Norman Drive
Waukegan, IL 60085

p (847) 578-1000 | f (847) 578-1200

e info@peerbearing.com

www.peerbearing.com